

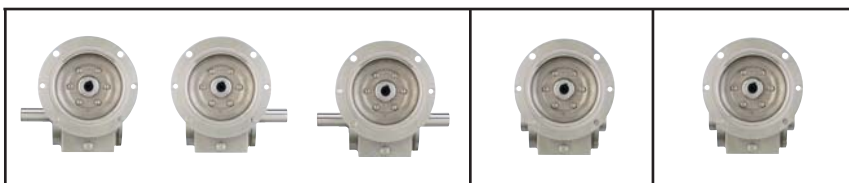
Stainless Steel Maximum Rating Tables

Size 818

Style SBMQ

Style SHMQ

Style SHMQ



818 Series

Ratio	nput		Output		Output Torque (lb in)	NEMA C nput Frame	L Assembly Catalog No	R Assembly Catalog No	D Assembly Catalog No	H1 Assembly Catalog No *	H2 Assembly Catalog No *
	RPM	HP	RPM	HP							
5	2500	500.0	3.095	2.900	366	56C	S183003700	S183004900	S183006100	S1830457XX	S1830469XX
	1750	350.0	2.600	2.422	436	143-5TC	S183007300	S183008500	S183009700	S1830481XX	S1830493XX
	1170	234.0	2.066	1.906	513						
7.5	100	20.0	0.312	0.228	717	56C	S183007400	S183008600	S183009800	S1830482XX	S1830494XX
	2500	333.3	2.307	2.127	402						
	1750	233.3	1.909	1.745	471	143-5TC	S183003800	S183005000	S183006200	S1830458XX	S1830470XX
10	100	13.3	0.227	0.147	697	56C	S183007500	S183008700	S183009900	S1830483XX	S1830495XX
	2500	250.0	1.996	1.820	459						
	1750	175.0	1.625	1.466	528	143-5TC	S183003900	S183005100	S183006300	S1830459XX	S1830471XX
15	100	10.0	0.196	0.118	744	56C	S183004000	S183005200	S183006400	S1830460XX	S1830472XX
	2500	166.7	1.485	1.301	492						
	1750	116.7	1.224	1.058	571	143-5TC	S183007600	S183008800	S183010000	S1830484XX	S1830496XX
20	100	6.7	0.165	0.087	823	56C	S183004100	S183005300	S183006500	S1830461XX	S1830473XX
	2500	125.0	1.283	1.093	551						
	1750	87.5	1.046	0.875	630	143-5TC	S183007700	S183008900	S183010100	S1830485XX	S1830497XX
25	100	5.0	0.150	0.069	872	56C	S183004200	S183005400	S183006600	S1830462XX	S1830474XX
	2500	100.0	1.088	0.900	567						
	1750	70.0	0.884	0.715	644	143-5TC	S183007800	S183009000	S183010200	S1830486XX	S1830498XX
30	100	4.0	0.135	0.055	874	56C	S183004300	S183005500	S183006700	S1830463XX	S1830475XX
	2500	83.3	0.892	0.702	531						
	1750	58.3	0.741	0.569	614	143-5TC	S183007900	S183009100	S183010300	S1830487XX	S1830499XX
40	100	3.3	0.126	0.047	880	56C	S183004400	S183005600	S183006800	S1830464XX	S1830476XX
	2500	62.5	0.739	0.551	556						
	1750	43.8	0.609	0.440	634	143-5TC	S183008000	S183009200	S183010400	S1830488XX	S1830500XX
50	100	2.5	0.113	0.035	874	56C	S183004500	S183005700	S183006900	S1830465XX	S1830477XX
	2500	50.0	0.625	0.444	559						
	1750	35.0	0.515	0.352	634	143-5TC	S183008100	S183009300	S183010500	S1830489XX	S1830501XX
60	100	2.0	0.103	0.027	857	56C	S183004600	S183005800	S183007000	S1830466XX	S1830478XX
	2500	41.7	0.542	0.363	550						
	1750	29.2	0.449	0.288	623	143-5TC	S183008200	S183009400	S183010600	S1830490XX	S1830502XX
80	100	1.7	0.097	0.022	842	56C	S183004700	S183005900	S183007100	S1830467XX	S1830479XX
	2500	31.3	0.247	0.156	314						
	1750	21.9	0.208	0.124	356	143-5TC	S183008300	S183009500	S183010700	S1830491XX	S1830503XX
100	100	1.3	0.023	0.009	470	56C	S183004800	S183006000	S183007200	S1830468XX	S1830480XX
	2500	25.0	0.167	0.097	245						
	1750	17.5	0.141	0.077	277	143-5TC	S183008400	S183009600	S183010800	S1830492XX	S1830504XX

Consult Factory for other available styles and motor flanges.

Available bore codes

Fraction Size	5/8"	11/16"	3/4"	7/8"	1"
Decimal Size	0.625	0.688	0.750	0.875	1.000
Output Bore Code	10	11	12	14	16

* Catalog numbers are for hollow output shaft reducers.

When ordering, substitute the XX suffix with the required output bore code.

Single Reduction
Worm Gear Reducers

Double Reduction
Worm - Worm Gear Reducers

Double Reduction
Helical - Worm Gear Reducers

WASHGUARD® Reducers
and GEAR+MOTOR™

Ratio Multipliers

Accessories and
Additional Capabilities

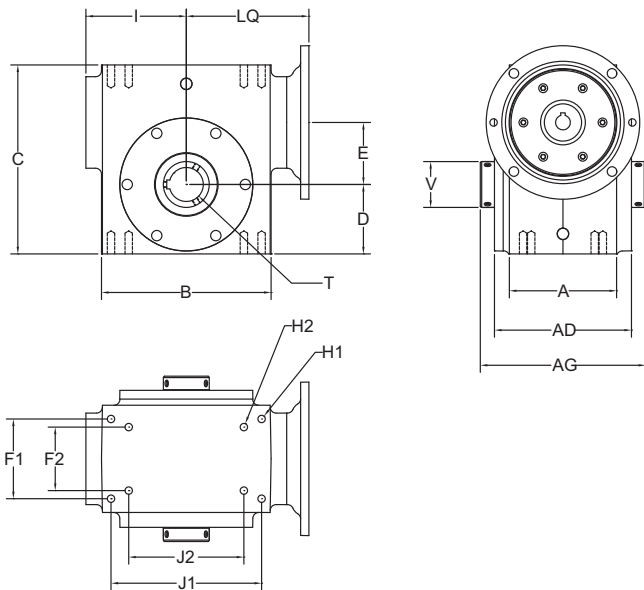
HMQ Style

	A	AD	B	C	D	E	F1	F2	H1	H2		J1	J2	LQ (56C)	LQ (180TC)	T MAX	T KWY	V	AG
813	2 82	3 69	3 80	4 66	1 72	1 333	2 00	N/A	5/16 18	N/A	2 38	3 25	N/A	3 48	N/A	0 625	3/16 x 3/32	1 00	4 75
815	3 44	4 40	4 88	5 38	1 91	1 540	2 75	N/A	5/16 18	N/A	2 91	4 19	N/A	4 01	N/A	0 625	3/16 x 3/32	1 00	5 42
818	3 32	4 40	5 06	5 75	2 06	1 750	2 75	1 63	5/16 18	1/4 20	3 01	4 19	3 13	4 11	N/A	1 000	1/4 x 1/8	1 44	5 50
821	3 60	4 78	5 80	6 38	2 28	2 063	3 00	2 00	5/16 18	5/16 18	3 38	4 75	4 00	4 48	N/A	1 500	3/8 x 3/16	1 94	6 00
824	4 06	4 97	6 12	6 94	2 50	2 375	2 88	N/A	3/8 16	N/A	3 69	5 00	N/A	4 63	5 24	1 500	3/8 x 3/16	1 94	6 00
826	4 54	5 80	7 25	8 00	2 94	2 625	3 38	2 69	3/8 16	3/8 16	4 25	6 38	4 88	5 19	5 80	1 500	3/8 x 3/16	1 94	7 00
832	5 45	6 80	8 50	9 38	3 50	3 250	4 00	2 75	7/16 14	1/2 13	4 94	7 50	6 25	5 88	6 49	2 188	1/2 x 1/4	2 75	7 88

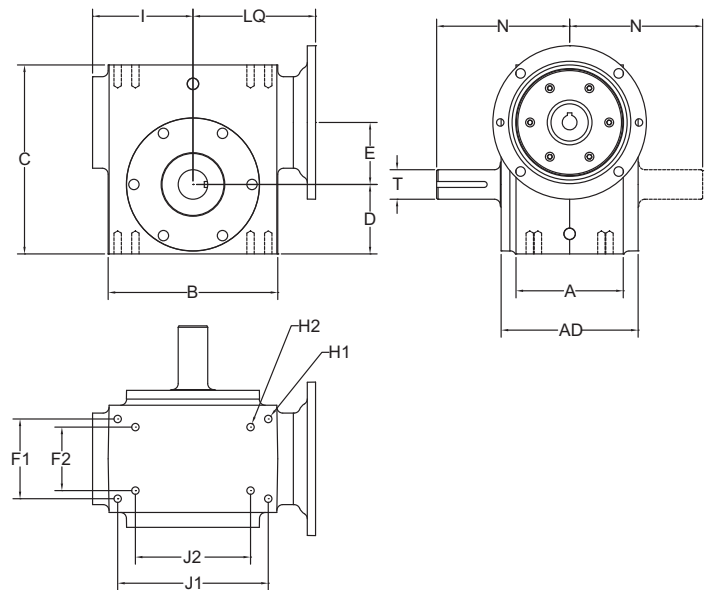
BMQ Style

	A	AD	B	C	D	E	F1	F2	H1	H2		J1	J2	LQ (56C)	LQ (180TC)	N	O/P Key	T
813	2 82	3 69	3 80	4 66	1 72	1 333	2 00	N/A	5/16 18	N/A	2 38	3 25	N/A	3 48	N/A	4 00	3/16 x 1 75	0 625
815	3 44	4 40	4 88	5 38	1 91	1 540	2 75	N/A	5/16 18	N/A	2 91	4 19	N/A	4 01	N/A	4 31	3/16 x 1 75	0 750
818	3 32	4 40	5 06	5 75	2 06	1 750	2 75	1 63	5/16 18	1/4 20	3 01	4 19	3 13	4 11	N/A	4 31	3/16 x 1 38	0 875
821	3 60	4 78	5 80	6 38	2 28	2 063	3 00	2 00	5/16 18	5/16 8	3 38	4 75	4 00	4 48	N/A	4 68	1/4 x 1 45	1 000
824	4 06	4 97	6 12	6 94	2 50	2 375	2 88	N/A	3/8 16	N/A	3 69	5 00	N/A	4 63	5 24	5 14	1/4 x 1 75	1 125
826	4 54	5 80	7 25	8 00	2 94	2 625	3 38	2 69	3/8 16	3/8 16	4 25	6 38	4 88	5 19	5 80	5 63	1/4 x 2 00	1 250
832	5 45	6 80	8 50	9 38	3 50	3 250	4 00	2 75	7/16 14	1/2 13	4 94	7 50	6 25	5 88	6 49	7 06	3/8 x 2 63	1 500

HMQ Style



BMQ Style



Single Reduction
Worm Gear Reducers

Double Reduction
Worm - Worm Gear Reducers

Double Reduction
Helical - Worm Gear Reducers

WASHGUARD® Reducers
and GEAR-H-MOTOR™

Ratio Multipliers

Accessories and
Additional Capabilities